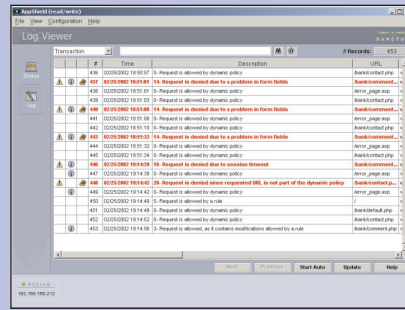




Most products in the business of web server protection do the regulation blocking, logging and alerting of the illicit activity, but *AppShield* goes a step further by actually sending a warning to the possible perpetrator that the questionable behavior has been detected and recorded. *AppShield* is a 24/7 automated web application firewall securing both your site and applications even if your site generates content dynamically or you continually develop and launch new applications. Employing Sanctum's patented Policy Recognition engine, *AppShield* creates, automatically and on the fly, rules for legitimate behavior based on the HTML code within the page. It is then able to check that every request conforms to the specific policy for that user session and page. It is also worth noting that *AppShield* is the first security product to achieve certification for web application policy enforcement (WAPE) from ICSA Labs.

The current dichotomy of e-commerce lies in the fact that at one end of the spectrum you have economic success, while at the other end you have an explosion of new software code to keep abreast of dynamic web applications, which need constant patching and updating to remain secure.

# AppShield



**Version:** 4.0  
**Supplier:** Sanctum Inc.  
**Price:** on application  
**Contact:** (408) 855-9500  
 sanctumsales@sanctuminc.com  
 www.sanctuminc.com

**FOR** There is even an option to hide sensitive data like passwords and credit card numbers in log files! It's easy to do and it works.

**AGAINST** None.

**VERDICT** This is a massive product, and I haven't even scratched the surface. It is sophisticated with an incredible range of services.

Features	★★★★★
Ease of use	★★★★☆
Performance	★★★★★
Documentation	★★★★★
Support	★★★★★
Value for money	n/a
<b>Overall Rating</b>	<b>★★★★★</b>

**There is even an option to hide sensitive data like passwords and credit card numbers in log files! It's easy to do and it works.**

Really a web application firewall, *AppShield* secures the web site by blocking any type of online application manipulation.

I always warm to a system that gives you an escape route if you mess up, and *AppShield* has some handy escape features. For example, each time you modify the *AppShield* configuration, the previous configuration is saved and you can restore this (and your sanity) with the Revert Configuration command and try again. There are four configuration modes available that should cover the majority of network topologies. Tasks like certificate installation that could prove tedious if you have lots of web servers can be dramatically simplified using the copy procedure. You only need to install a certificate on one web server and merely edit the IP address and port on all subsequent servers.

*AppShield* employs URL mapping, and this could be a vital feature for readers with higher than average security requirements. An embedded reverse proxy feature, it enables you to map a route for requests received through *AppShield*, from the requested URL to a different URL. This is completely transparent to the client and its implementation is extremely advantageous, the most obvious being that true path information and directory structures are hidden.

You can define the level of security you want *AppShield* to perform on your site or customize your own level. There are three predefined levels available: strict, intermediate and basic. These are designed by Sanctum to hit the optimal balance between ease of configuration and the level of security desired. Whichever one you choose, you can select an enforcement mode of active or passive depending upon whether you want active protection or merely logging of security alerts.



Contact Information:



**Sanctum Inc.**  
 2901 Tasman Drive, Ste 205  
 Santa Clara, CA 95054  
 408-855-9500  
 sanctumsales@sanctuminc.com  
 www.sanctuminc.com